

PRODUCT OVERVIEW

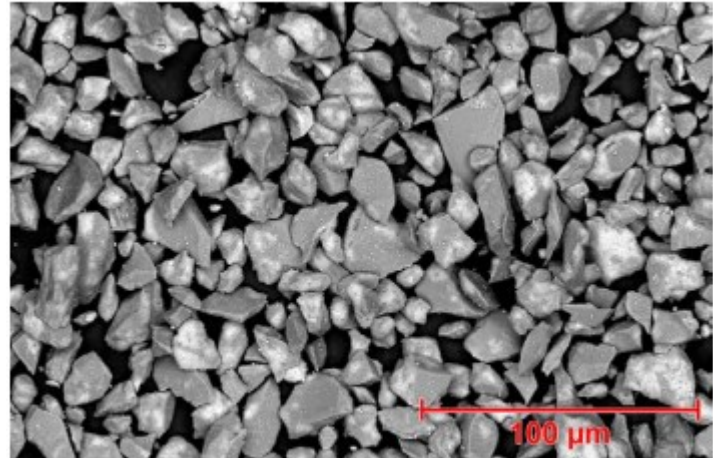
PWD000130 is powder consisting of alumina and 13 % titania (nominal). They are designed to produce dense, extremely wear resistant ceramic coatings that can be ground to excellent finishes. Coatings of these materials generally have higher toughness, but lower hardness, dielectric strength and relatively less resistance to chemical attack than coatings of alumina 3 % titania or pure alumina. Coatings can be used at operating temperatures up to 540 °C (1000 °F)

APPLICATION

- ⇒ Hydraulic parts
- ⇒ Plungers
- ⇒ Automotive parts
- ⇒ Textile manufacturing components and tooling
- ⇒ Components for the chemical industry
- ⇒ Electrical insulation and dielectric applications

HAZARDS:

Observe safe spraying practices. See Polymet material safety data sheet for details.



SEM photomicrograph.

PARTICLE SIZE DISTRIBUTION (TYPICAL):

15-53 micron

NOMINAL CHEMICAL COMPOSITION (wt%)

Al_2O_3	TiO_2	TAO (max)
Bal	11.5 – 15.0	5.5

STANDARD SIZES & PACKAGING:

Packaging	Part Number
25 lb. pails	PWD000130