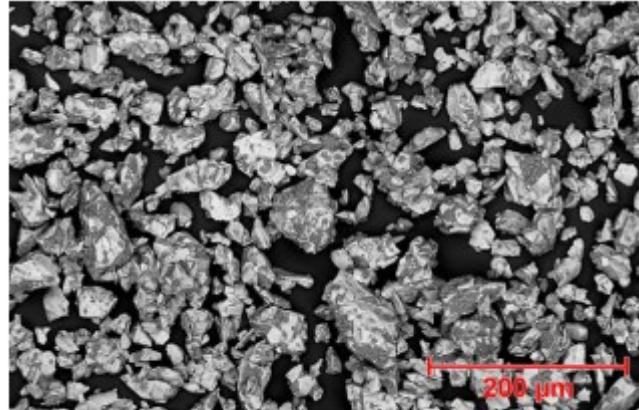


PRODUCT OVERVIEW

PWD00136F is a chromia - silica thermal spray powder which produces a hard, dense and extremely wear resistant coating. This coating is coveted for its excellent corrosion resistance, particularly to acids, alkalis, and alcohols. The silicon dioxide acts as a dampening medium that absorbs impact loading and prevents grain loosening, which enhances the wear resistance of the coating. Coatings made from of this powder are insoluble in most acids, alkalis and alcohol and when properly sealed, can be utilized in corrosive chemical environments at temperatures up to 200 °C (400 °F)

APPLICATION

- ⇒ Pump impellers
- ⇒ Reciprocating pump compressor rods
- ⇒ Air and gas cylinder internals
- ⇒ Centrifugal pump seals
- ⇒ Wear rings
- ⇒ Casing rings
- ⇒ Down-hole plungers in petrochemical industry
- ⇒ Mechanical seal application
- ⇒ Machine elements used for textile manufacturing



Morphology of PWD00136F, a mechanically clad powder

HAZARDS:

Observe safe spraying practices. See Polymet material safety data sheet for details.

PARTICLE SIZE DISTRIBUTION (TYPICAL):

5-63 microns

NOMINAL CHEMICAL COMPOSITION (wt%)

Cr ₂ O ₃	Fe ₂ O ₃	SiO ₂	TiO ₂	TAO (Max)	Organics (max)
BAL	<0.5	3.0-4.5	<4.0	2.0	2.5

STANDARD SIZES & PACKAGING:

Packaging	Part Number
10lb bottles	PWD00136F